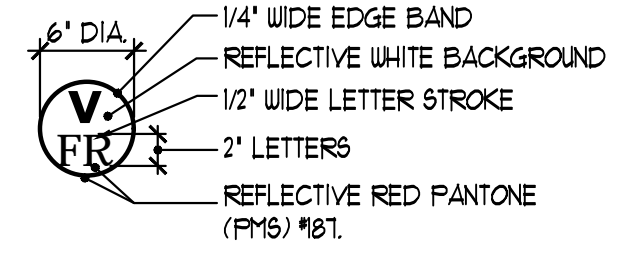


**FRONT ELEVATION**  
1/4" = 1'-0"

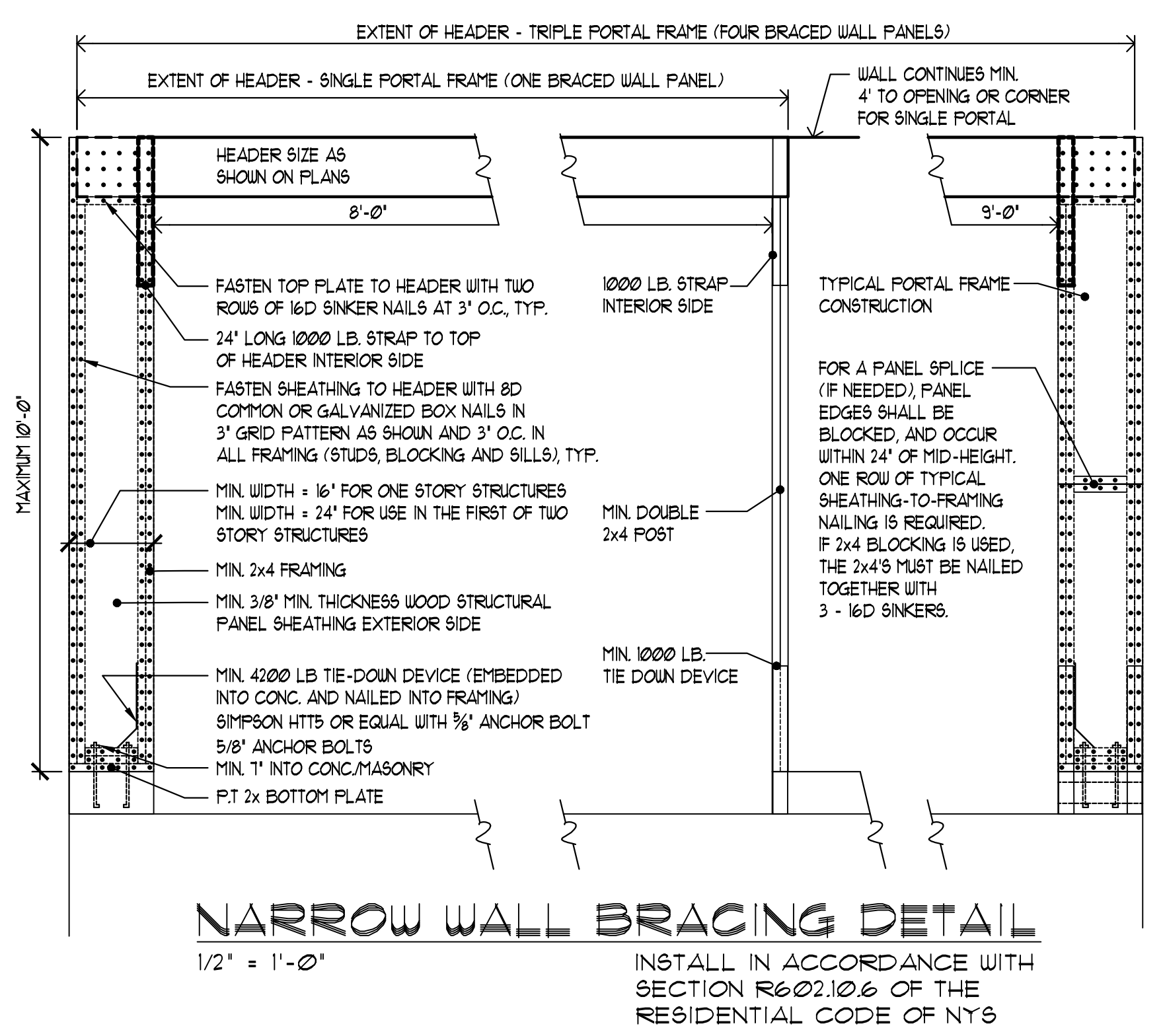
**2015 INTERNATIONAL ENERGY CONSERVATION CODE**  
PRESCRIPTIVE COMPONENT COMPLIANCE WITH TABLE 402.1.2  
CLIMATE ZONE 5

ENVELOPE COMPONENT	REQUIRED R' VALUE	PROVIDED R' VALUE
EXTERIOR WALL INSULATION	R = 20	R = 20
ROOF/CEILING INSULATION	R = 49	R = 49
GLAZING	U = .32	U = .32 (MAX)
BASEMENT WALLS	R = 15	R = 15

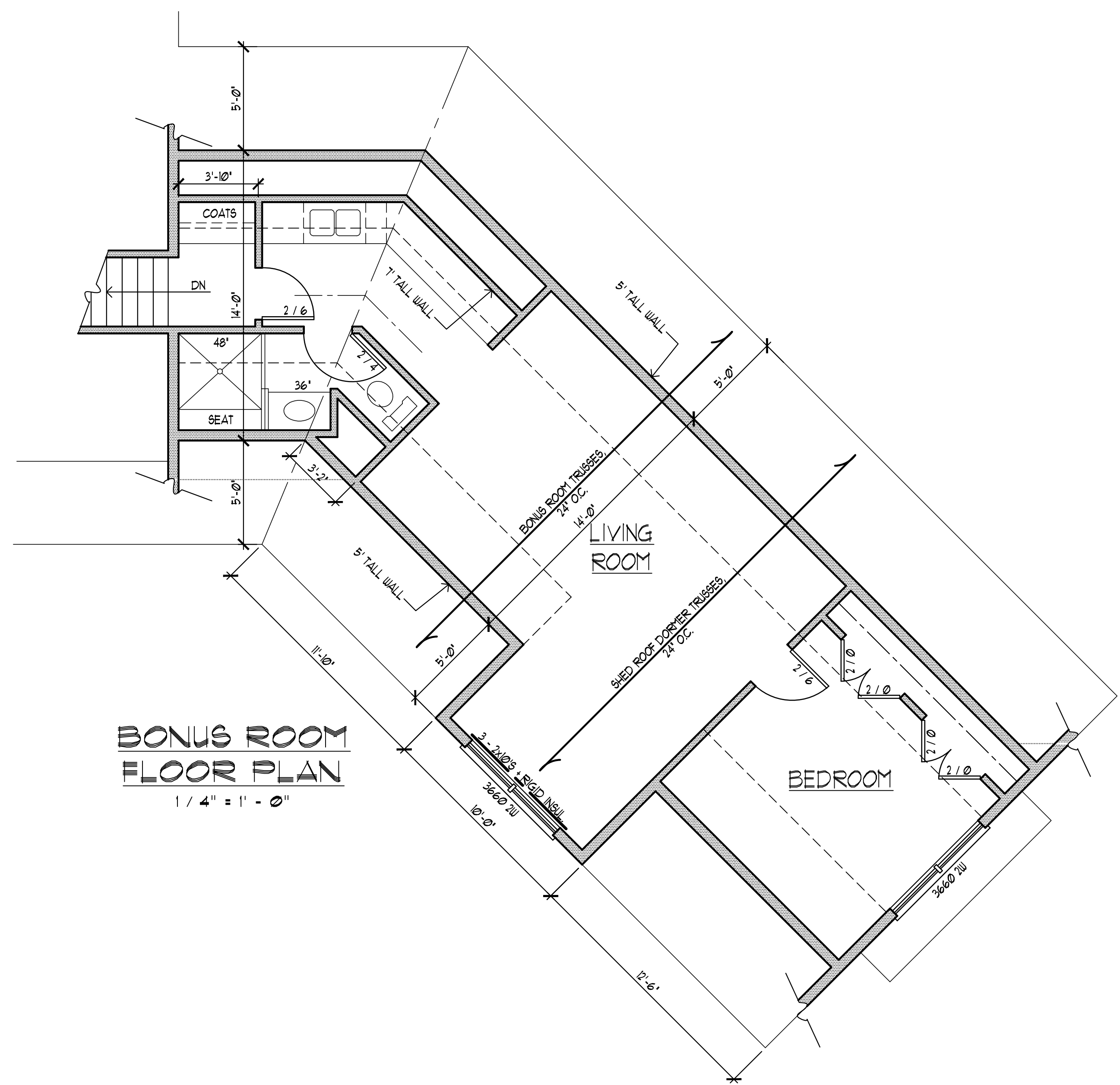


SIGN SHALL BE A PERMANENT NON-FADING STICKER OR DECAL.  
**TRUSS IDENTIFICATION SIGN**  
INSTALL ON EXTERIOR ELECTRICAL BOX OR IF NOT POSSIBLE AFFIX TO EXTERIOR WALL IMMEDIATELY ADJACENT TO ELECTRICAL BOX

TO THE BEST OF MY KNOWLEDGE, BELIEF AND PROFESSIONAL JUDGEMENT, THESE PLANS ARE IN COMPLIANCE WITH THE 2015 INTERNATIONAL ENERGY CONSERVATION CODE AS AMENDED BY NYS.



**NARROW WALL BRACING DETAIL**  
1/2" = 1'-0"  
INSTALL IN ACCORDANCE WITH SECTION R602.10.6 OF THE RESIDENTIAL CODE OF NYS



**BONUS ROOM FLOOR PLAN**  
1/4" = 1'-0"